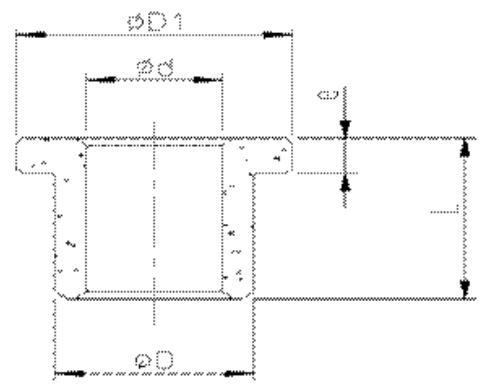


AM, AI, AW



AL, AJ (with flange)

Material Chemical Component	Cu 54-56%		Sn 4-6%	Fe 39-41%				
Physical and Mechanical Performance	Oil content (%)	$\geq 18\%$	Oil density (g/cm ³)	6.2-6.8	Crushing strength (N/mm ²)	> 150	Surface hardness (HB)	25-55
HMEC Type no.	Dimension							
	d		D		L		D1	e
AM 152115	15	+0.034 +0.006	21	+0.066 +0.035	15	± 0.135		
AM 152125	15	+0.034 +0.006	21	+0.066 +0.035	25	± 0.165		
AM 162012	16	+0.034 +0.006	20	+0.066 +0.035	12	± 0.135		
AM 162020	16	+0.034 +0.006	20	+0.066 +0.035	20	± 0.165		
AM 162025	16	+0.034 +0.006	20	+0.066 +0.035	25	± 0.165		
AM 162212	16	+0.034 +0.006	22	+0.066 +0.035	12	± 0.135		
AM 162216	16	+0.034 +0.006	22	+0.066 +0.035	16	± 0.135		
AM 162220	16	+0.034 +0.006	22	+0.066 +0.035	20	± 0.165		
AM 162225	16	+0.034 +0.006	22	+0.066 +0.035	25	± 0.165		
AM 162230	16	+0.034 +0.006	22	+0.066 +0.035	30	± 0.165		
AM 182418	18	+0.034 +0.006	24	+0.066 +0.035	18	± 0.165		
AM 202520	20	+0.034 +0.006	25	+0.066 +0.035	20	± 0.165		
AM 202525	20	+0.034 +0.006	25	+0.066 +0.035	25	± 0.165		
AM 202615	20	+0.034 +0.006	26	+0.066 +0.035	15	± 0.135		
AM 202625	20	+0.034 +0.006	26	+0.066 +0.035	25	± 0.165		
AM 222820	22	+0.034 +0.006	28	+0.066 +0.035	20	± 0.165		
AM 222825	22	+0.034 +0.006	28	+0.066 +0.035	25	± 0.165		
AM 253020	25	+0.034 +0.006	30	+0.066 +0.035	20	± 0.165		
AM 253025	25	+0.034 +0.006	30	+0.066 +0.035	25	± 0.165		
AM 253030	25	+0.034 +0.006	30	+0.066 +0.035	30	± 0.165		
AM 253050	25	+0.034 +0.006	30	+0.066 +0.035	50	± 0.195		